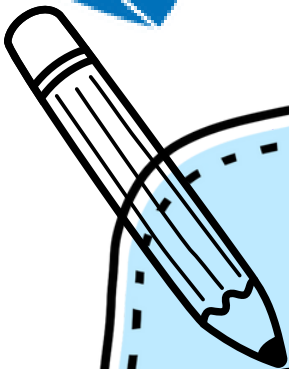


ARKANSAS

DECA



**Survival Kit**



# Getting Started

Whether you're a new chapter getting started or an older chapter trying to get a better understanding you have come to the right spot!

These questions you are asking yourself have answers that can be found here!

How do I start a chapter?

How do I get my chapter more involved?

What is a chapter campaign?



# How to Start a Chapter

Trying to start a chapter can be hard and tricky because you're not sure if you have the criteria to start a chapter but you're also not sure what you're getting into.

## 1. DECA Inc requirements

- Have 1 advisor
- have 10 students
- pay DECA dues

## 2. Association's requirements

- Any questions email Becky McCormick at [Becky.McCormick@ade.arkansas.gov](mailto:Becky.McCormick@ade.arkansas.gov)

## 3. Get approval from your school

- Talk to your school principle or CTE director about getting their approval

## 4. Officially request to start a chapter

- Go to [deca.org](http://deca.org) and fill out the form online

## 5. Submit your members

- Once you get approval submit your members and get started


## 6. Get connected

- Sign up for DECA Direct and if you have any questions go to [deca.org](http://deca.org)!

Deca.org for more information

<https://www.deca.org/start>





# How to get my chapter more involved

So you started a chapter but you're unsure of what to do next.



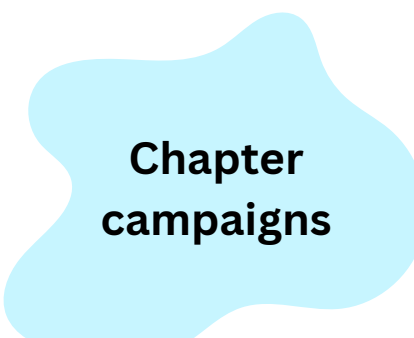
## Fall Leadership Conference (FLC)

This is a great way for new chapters to become more active. It's a fun-filled day planned by your state officers. Not only is it super fun it's incredibly educational. The best part is every year is different!

SCDC is an amazing way to get your chapter heard! It may be scary at first, but once you get the first one out of the way you will see the amazing opportunities offered. Kids will be able to work on a project from the selected categories on DECA.org and show them off to be judged. If a student places 1-3 they get to move on to the international conference!



## State Career Development Conference (SCDC)



## Chapter campaigns

Chapter campaigns are a great way to teach members about responsibility, teamwork, and consistency. When you go to SCDC and ICDC you will see everyone wearing ribbons on their lanyards, this shows what your chapter has completed and how hard a chapter works!

# Chapter Campaigns

**Chapter campaigns, lets talk about them!**

**Campaigns are split into different categories, Membership, Promotional, Community Service, Ethical Leadership, and Advocacy**

**When trying to complete a chapter campaign it's good to have a leadership team much like the state office. To make things easier it's a good idea to make a program of leadership. The Arkansas DECA program of leadership can be found at this link <http://www.arkansasdeca.com> this will help you gather an idea of what yours should look like.**

**To fully understand whats needed for a chapter campaign go to this link <https://www.deca.org/advisor-resources/chapter-campaign-guidebook> this link is to DECA.org which has the guidebook on everything you need to know to start a campaign**

**All of the state officers are here to help! if you have any questions don't hesitate to go to the AR DECA website and get in touch!**